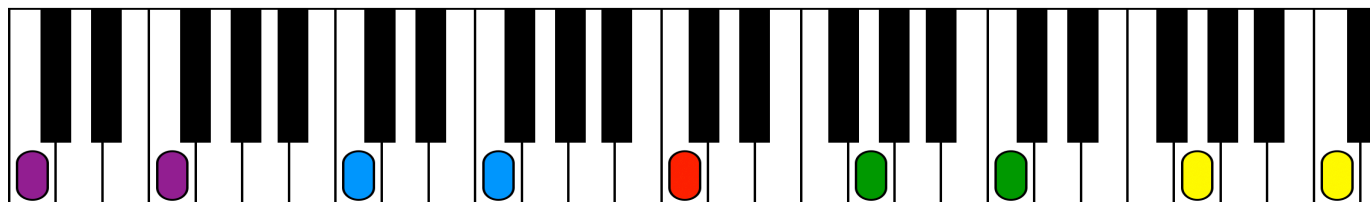


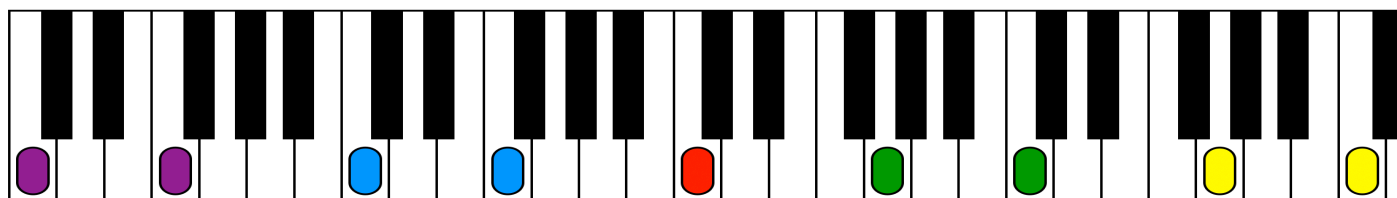
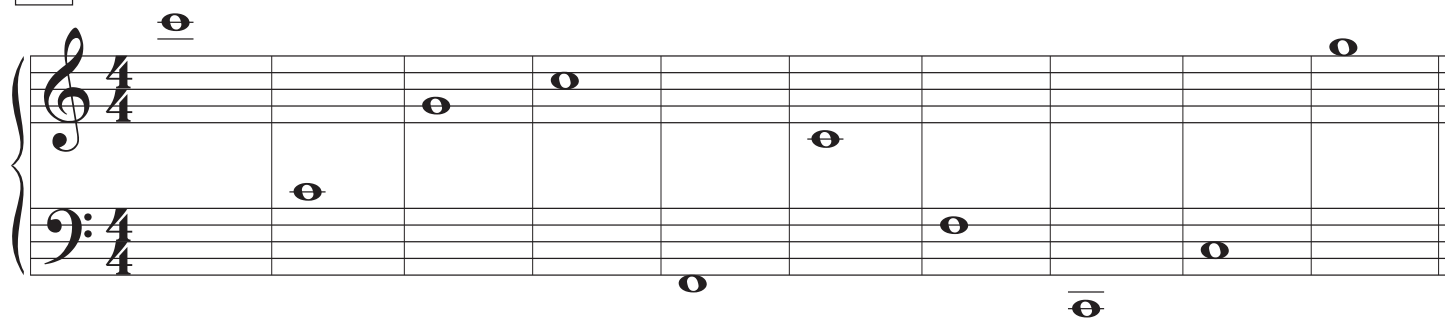
Landmark Connect

NancyDeHaven.com

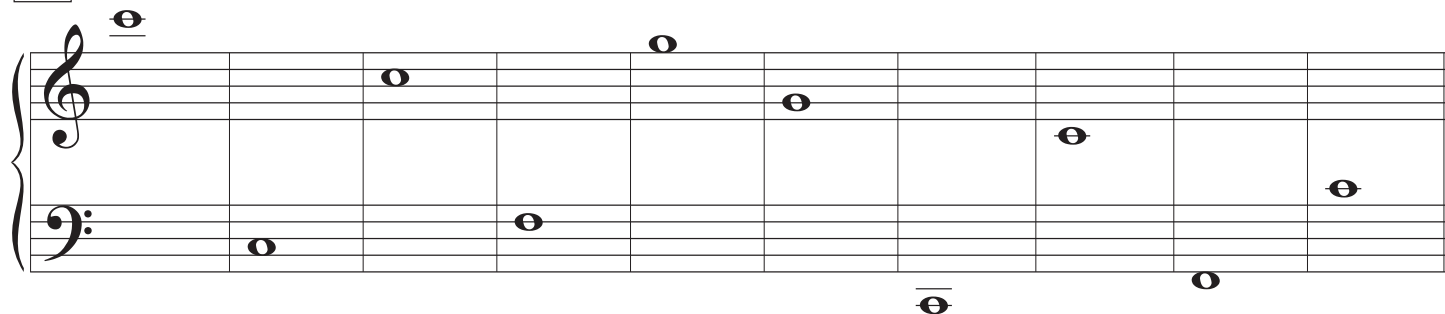
Draw a line connecting the note on the staff to the correct key on the keyboard.



A



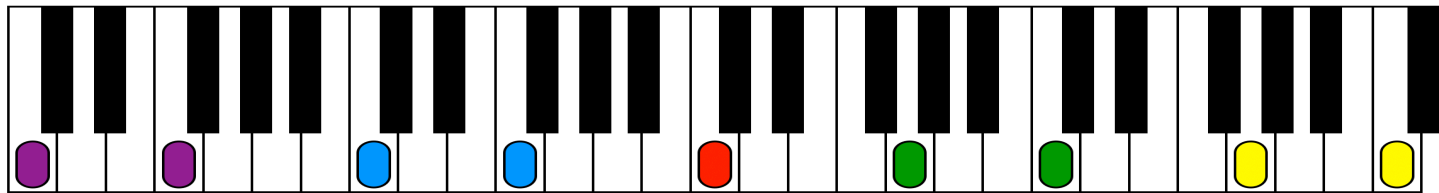
B



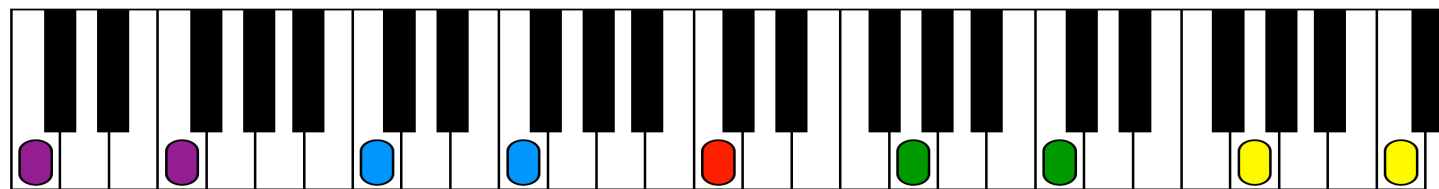
© 2022 Nancy D. Hall

Permission is granted to share in any medium or format for non-commercial purposes only, provided any given page is distributed in it's entirety, with no alteration or modification.

Draw a line connecting the note on the staff to the correct key on the keyboard.



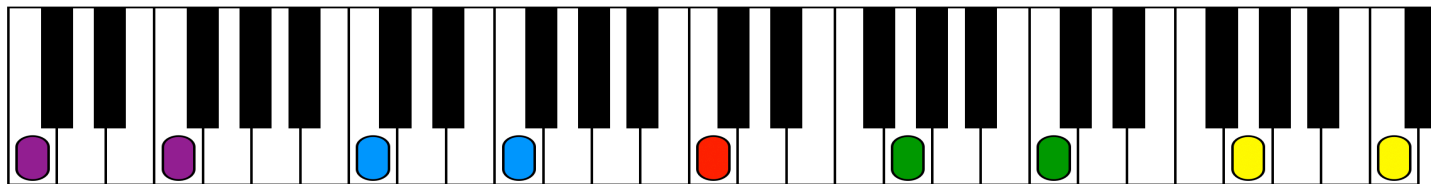
C

A musical staff with a treble and bass clef. The notes are: C4 (bass), E4 (treble), G4 (treble), B4 (treble), D5 (treble), F5 (treble), A5 (treble), C5 (treble), E5 (treble), G5 (treble), B5 (treble), D6 (treble), F6 (treble), A6 (treble), C6 (treble). The notes are placed on the staff lines and spaces.

D

A musical staff with a treble and bass clef. The notes are: D4 (bass), F4 (treble), A4 (treble), C5 (treble), E5 (treble), G5 (treble), B5 (treble), D6 (treble), F6 (treble), A6 (treble), C7 (treble), E7 (treble), G7 (treble), B7 (treble), D8 (treble). The notes are placed on the staff lines and spaces.

Draw a line connecting the note on the staff to the correct key on the keyboard.



E

F